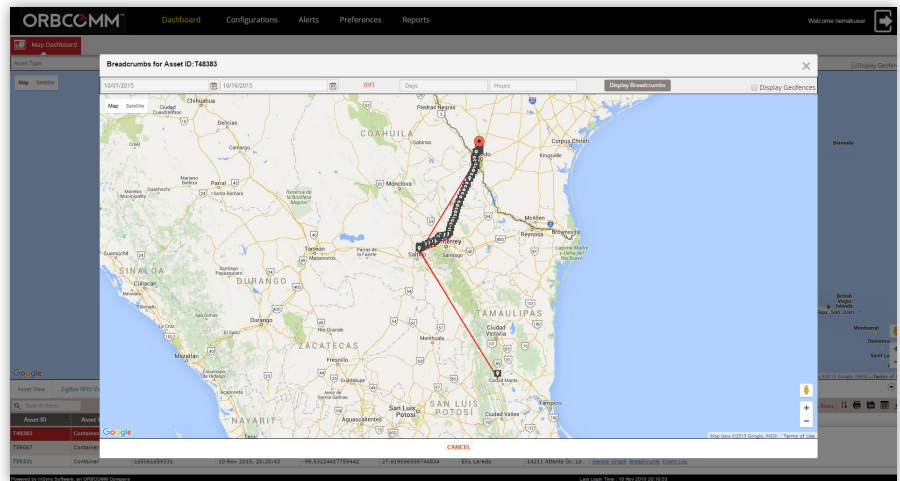


CargoWatch Secure

Cargo security and condition monitoring for transportation and logistics.

Comprehensive cargo condition monitoring and chain of custody automation for trailers, intermodal container operators, and more.



ORBCOMM's CargoWatch Secure is a powerful cargo security and condition monitoring solution that delivers complete asset lifecycle awareness as well as visibility of cargo in transit and in storage. The application is intuitive and easy to use, and enables customers to monitor the supply chain in real-time and quickly detect and correct anomalies, reduce losses and streamline chain of custody processes.

CargoWatch Secure provides greater visibility and awareness, transforming trip data into billing and insurance records so that customers can quickly manage accounts payable, complete audits and provide value-added services to customers such as shipment status, current location and ETA

Features

Location Tracking: Access cargo historical and real-time position data for complete operational visibility. Use breadcrumb reports to track asset movement and geofences. Enable automated alerts.

Trip Management: Track a trip from start to finish. Trips can be started and ended manually, or automatically based on location or time. Configure a trip to automatically send data to an external feed.

Configurable Reporting Intervals: Configure reporting intervals based on your specific needs. Receive reports as often as once per minute or as infrequently as once every few days.

Sensor Data: Incorporate sensors into the solution to obtain critical cargo condition data such as temperature, humidity, light, vibration and shock in order to ensure product integrity at delivery.

Event-Based Alerts: Receive real-time alerts via text or email when specific user-defined conditions are detected, such as:

- Seal tampering
- Door intrusion
- Unplanned stops
- Route deviations
- Out-of-range thresholds

Intrusion and tampering alerts

Customizable and easy to use

Periodic reporting and event-based alerts

Advanced analytics for business intelligence

Real-time cargo visibility every step of the way

Advanced trip management and cargo condition monitoring



System Intelligence and Analytics: By combining trip information and sensor data with advanced reporting capabilities, CargoWatch Secure helps you improve operational efficiency, offer better customer service and minimize losses and claims.

Sensor Graphs: View sensor data on a graph. Overlap multiple parameters for advanced data analysis.

The CargoWatch Secure Solution

CargoWatch Secure supports the ORBCOMM GT 600, GT 1000 and GT 2000, as well as select third-party devices that communicate with the application via RFID, GSM cellular, satellite and ZigBee wireless LAN technologies.

Alert Name	Asset ID	Device ID	Location	Geofence	Alert Raised On(GMT)	Status	Alert Closed On(GMT)	Alert Closed By
Exit Alert	T48383	L65061648383	NEMAKSALTILLO	NEMAKSALTILLO	11 Nov 2015, 17:33:37	Open		
Entry Alert	T48383	L65061648383	NEMAKSALTILLO	NEMAKSALTILLO	11 Nov 2015, 17:19:51	Open		
Entry Alert	T63929	L65061663929	NEMAKSALTILLO	NEMAKSALTILLO	11 Nov 2015, 16:53:19	Open		
Exit Alert	T63929	L65061663929	NEMAKSALTILLO	NEMAKSALTILLO	11 Nov 2015, 16:26:36	Open		
Exit Alert	T48383	L65061648383	NEMAKSALTILLO	NEMAKSALTILLO	11 Nov 2015, 15:38:55	Open		
Entry Alert	T48383	L65061648383	NEMAKSALTILLO	NEMAKSALTILLO	11 Nov 2015, 14:33:42	Open		

See and manage alerts on the Alert Hotlist

Region Name	Shape
test	Rectangle

The interface also includes a map of Texas and Coahuila with a black rectangle geofence overlaid on the border region near Tlaxiaco, Coahuila.

Create and manage geofences

LEARN MORE: Scan the QR code for the latest updates about CargoWatch Secure or visit www2.orbcomm.com/cargo-security.

CALL: 1.800.ORBCOMM EMAIL: SALES@ORBCOMM.COM VISIT: WWW.ORBCOMM.COM

ORBCOMM Inc. (Nasdaq: ORBC) is a leading global provider of Machine-to-Machine (M2M) communication solutions and the only commercial satellite network dedicated to M2M. ORBCOMM's unique combination of global satellite, cellular and dual-mode network connectivity, hardware, web reporting applications and software is the M2M industry's most complete service offering. Our solutions are designed to remotely track, monitor, and control fixed and mobile assets in core vertical markets including transportation & distribution, heavy equipment, industrial fixed assets, oil & gas, maritime and government.

R060916A