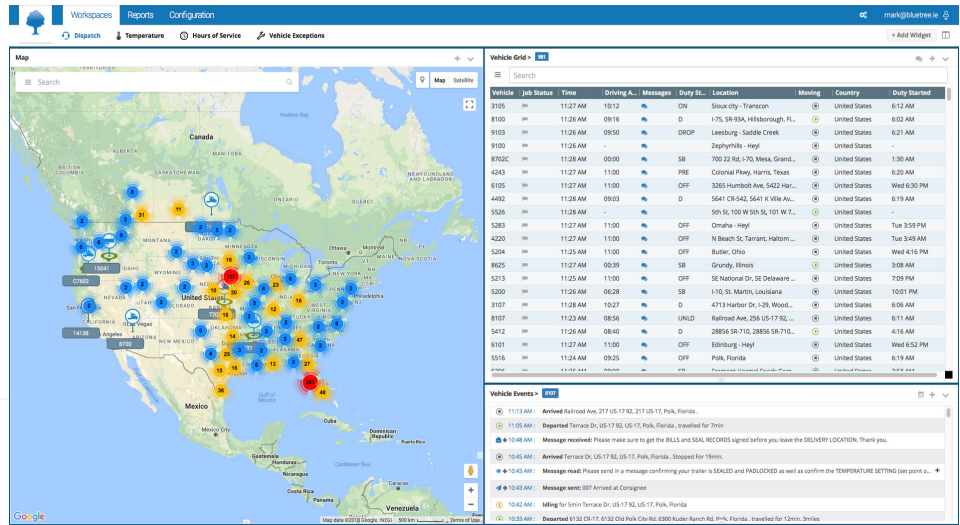


FleetManager

The next generation of fleet management software.

A cloud-based analytics platform and information management engine that unlocks powerful insight from fleet data.



Delivering individualized customization, configurable reporting, powerful intelligent search, multi-user management and advanced mapping, FleetManager unlocks valuable data for every user in the organization.

Customizable workspaces

Customize all the data you want to see. Choose the data important to you and then drag and drop into a widget layout. Filter the data, and then add, delete or move columns. Create as many widgets as you want; start with templated layouts or make your own.

Intelligent search

Get advanced data mining capabilities with FleetManager's powerful, intelligent search options. Search across drivers, vehicles, locations, depots or any other categories you have created. Drill down quickly to the information you are looking for, using + and - operators to find records in multiple places within your data.

Data categorization

Categorize your data your way, with as many different categories as you need. Organize the data with straightforward driver, vehicle or depot locations—or add any new categories that make sense for your operation.

Advanced mapping

FleetManager puts mapping at the heart of what it does. Set preferences for what you want to see and become more productive with features like finding nearby vehicles by driver, vehicle or location. Turn on or off locations or location categories; and set up geofences easily and quickly with two clicks.

Enhanced configurability

Introduce levels of permission configurations for SuperUsers, admins and standard users. Everything can be assigned permissions, with different levels for users and groups. You decide what functionality users and groups see and control, with functionality to suit beginner, advanced or power users.

Single view of all asset types – trucks, trailers, reefers and containers

Improve regulatory compliance, safety, productivity and fuel efficiency

Open and scalable

Live and historical reporting

Flexible and configurable



Intuitive reporting

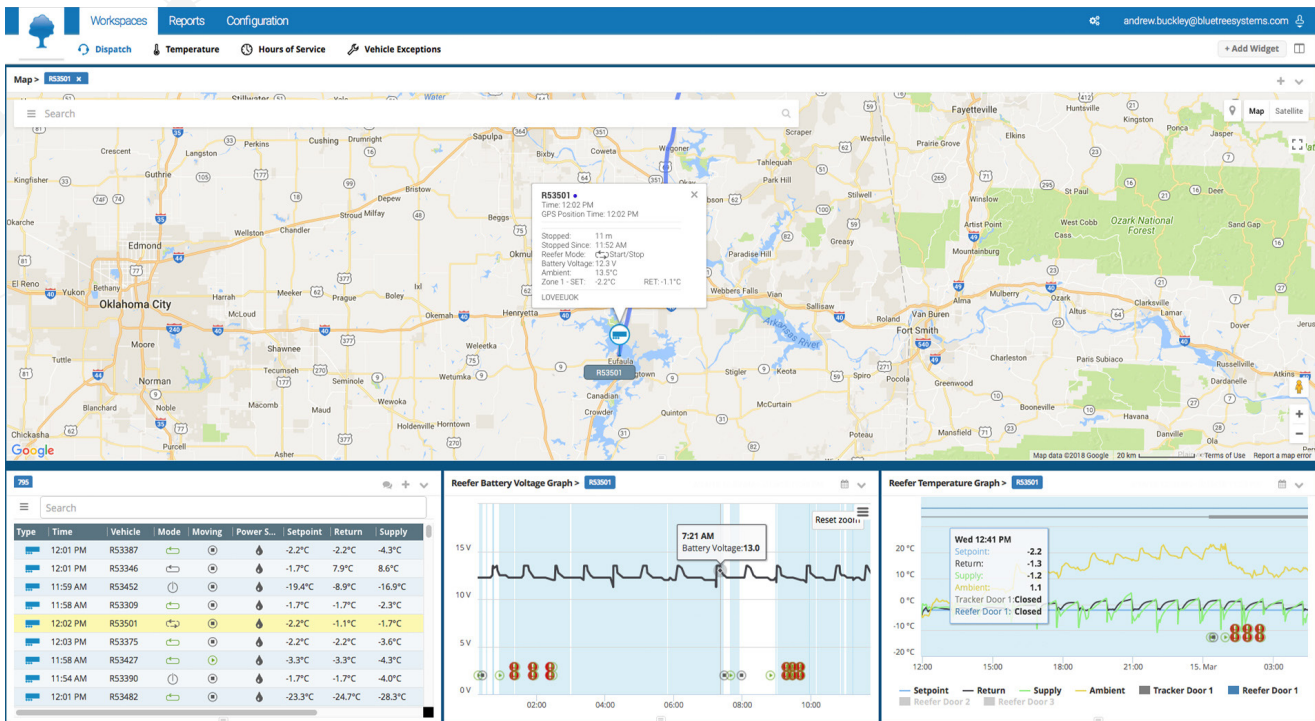
Discover in-depth reporting and insight with dozens of standard reports, easy and fast for you to use. Customize reports for your own use with enhanced zoom, pop-ups, and on/off columns, giving you extra flexibility in reporting.

Widget templates

Use multiple pre-defined views with widget templates, so you can organize the data in pre-set ways. Alternatively, create your own view and test what works for you. If you don't like it, change it with one click.

Supported hardware and applications

ORBCOMM's GT 1100, BT 500, BT 320 and BT 120 seamlessly integrate into FleetManager to deliver advanced reporting and analytics for truck, trailers reefers and multi-modal containers—all on one single platform. FleetManager can be configured to display specific workspaces depending on your fleet, with individual workspaces for dispatchers, Hours of Service/Electronic Logging Device management, temperature management, exceptions and more.



Location tracking, asset status, battery voltage and temperature graphs.

CALL: 1.800.ORBCOMM EMAIL: SALES@ORBCOMM.COM VISIT: WWW.ORBCOMM.COM

ORBCOMM (Nasdaq: ORBC) is a global leader and innovator in the industrial Internet of Things, providing solutions that connect businesses to their assets to deliver increased visibility and operational efficiency. The company offers a broad set of asset monitoring and control solutions, including seamless satellite and cellular connectivity, unique hardware and powerful applications, all backed by end-to-end customer support, from installation to deployment to customer care. ORBCOMM has a diverse customer base including premier OEMs, solutions customers and channel partners spanning transportation, supply chain, warehousing and inventory, heavy equipment, maritime, natural resources, and government. For more information, visit www.orbcomm.com.